



**KCB**

**BANK**

# PROPERTY LISTING 2025.

- ✓ Apartments.
- ✓ Town Houses.
- ✓ Bungalows.



**KCB**

**For People.**

**For Better.**

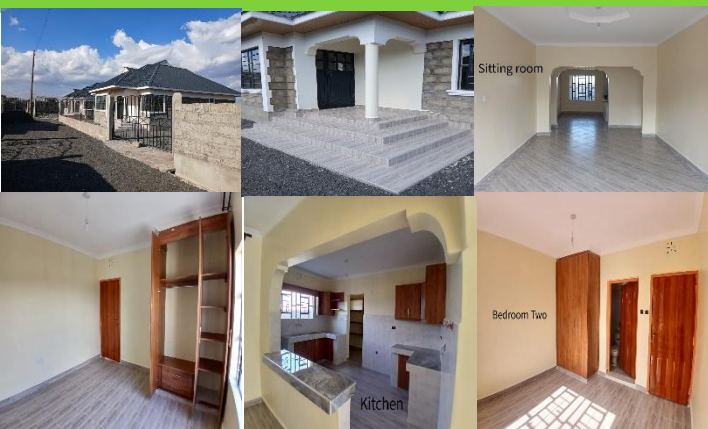
# BUNGALOWS IN MILAN MEADOWS, KITENGELA



These are 8, 3 bedroom all-ensuite bungalows in Muigai, Kitengela. Each house is 150sqm designed for comfort and style, featuring modern finishes, spacious living areas, solar heating and a private garden. Titles are ready and close to top schools, shopping centers and major transport links. Also offers secure, family-friendly living in a vibrant, fast growing neighborhood.

**Selling Price- Ksh 11,950,000**

## BUNGALOW IN MILIMANI, KITENGELA



These are 4, 3 Bedroom Bungalow on 50 by 100 plots in a gated community. It is located at Milimani Homes behind Orchard School.

**Selling Price- Ksh 7.3 Negotiable**

## 3 BEDROOM BUNGALOW IN MATASIA, NGONG



This is a 3 bedroom Bungalow located in Matasia, Ngong. It has a master ensuite with modern finishes and also its own title. Near amenities like schools, shopping malls and a church.

**Asking Price- Ksh 7.5 Million**



# 7 BEDROOM ALL ENSUITE TOWNHOUSE, RUNDA



The property is a Seven Bedroom all Ensuite Town House. It is a gated community with a very Big compound and Gazebo. The subject unit has Kitchen, laundry area, all ensuite bedrooms with a detached 2 Bedroom Domestic Servant Quarters.

The property is located off Glory Drive Road in Runda Estate. The approach from the city center is any Road that access Glory Drive and Road up to the said Court namely House Number 951. This property is located within a popular high income residential area and is easily accessible. It enjoys close proximity to social, economic amenities. The property is an ideal security for the mortgage loan.

**Asking Price: Kes 175 Million**

## APARTMENTS AT SERENE COURT- THINDINGUA



The property consists of 2 and 3 bedroom units master ensuite. Located in Thindigua just 300 meters from the road and 15 kilometers from Nairobi CBD. The units are well spaced with a good view of the surrounding environs. There is plenty of light and good accessibility even to necessary amenities.

**2 Bedroom – 7 Million**

**3 Bedroom – 8.5 Million**

## SAVANNAH WOODLANDS – MUGUTHA, RUIRU



The Development constitutes of 4 Bedrooms all ensuite townhouses in Mugutha, Ruiru near Mugutha secondary school along Mugutha-Oakland road. Various amenities include open pan kitchen with dining area, accessible terrace with pergola, extra toilet/wash closet at the terrace, ample parking for 2 cars, electric and razor wire fencing, 24/7 manned security and big green area.

Savannah Woodlands One

**15 M Cash (15.5M Mortgage ) Ready**

Savannah Woodlands Two

**16 M Cash (17 M Mortgage )**

**30% deposit, 6 months installments depending on construction stage)**



# PROPERTY CENTRE



## 3 BEDROOM VILLA IN JOSKA



The property is a 3 Bedroom Villa in Joska just 200m from Kangundo rd, 40 minutes from Nairobi CBD. Has a panoramic view terrace, master bedroom with wall to wall wardrobe, Skydeck rooftop, cozy family lounge, floating loft, built in kitchen and a stylish guest cloakroom.

**Asking Price- 20 Million**

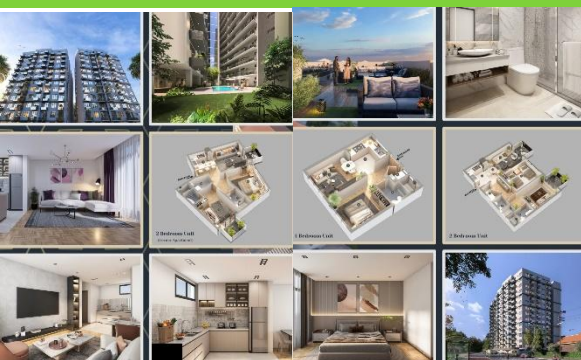
## 4 BR MAISONNETTES IN UTAWALA



4 Bedroom Mansionette available in Utawala Airways, Utawala. The house is well connected with basic amenities and relatively new with 2 floor and an outside looking balcony.

✓ **Asking Price- Kes 14 Million**

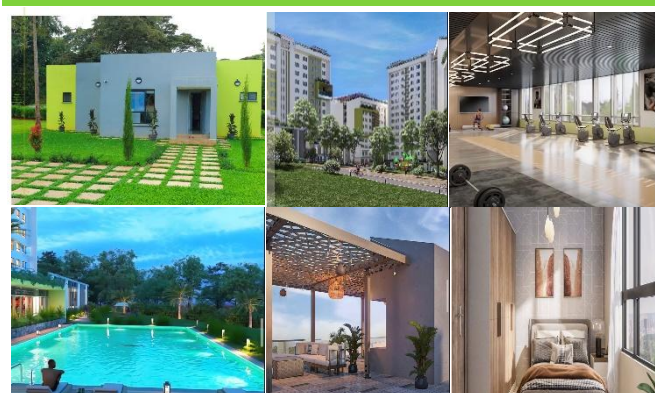
## OPAL LUXURY RESIDENCES



Opal Luxury Residences are located at Thindigua, Kimabu rd with access also via Windsor. The units contain the following features: Modern Finishes, Ample Parking, Green area, Infinity Pool, Biometric Door Entry, 24hr Security, State of the art gym, Solar Powered common area, 3 High Speed lifts, Convenient store, Intercon and Borehole

- ✓ **1 Bedroom Unit- Kes 4.5 Million**
- ✓ **2 Bedroom Unit- Kes 7.4 Million**
- ✓ **2 Br Corner Unit- Kes 7.5 Million**

## KEZA RIRUTA'S URBAN OASIS



Keza is located in the heart of Riruta near the Kikuyu rd and Naivasha rd junction. It boasts of a serene environment with adequate accessibility to key areas. It consists of courtyard, fitness centre, swimming pool, clubhouse, shy garden among others. Completion by the beginning of quarter 4, 2025.

- ✓ **Studios- ( 2.27 to 3.1 Million)**
- ✓ **One Bedrooms- (4.5 to 5.0 Million)**
- ✓ **Two Bedrooms- ( 7.0 to 7.6 Million)**
- ✓ **Three Bedrooms- ( 8.4 to 8.94 Million)**



**PROPERTY CENTRE**

## 3 BEDROOM TOWNHOUSE IN OLOLUA, NGONG



The house is located at Ololua Ngong, in Kajiado County on Ole Pash road. Below are the details:

- 3 Bedroom house
- Sitting on 1/8 acre individual compound
- 200 sqm
- All rooms are self contained
- Visitors cloak room
- Open plan kitchen with hob and spacious pantry
- Mahogany Wooden Floors in the living room
- Woodend laminated floors on all the bedrooms
- 300 liters indirect solar water heater
- 5000 liters underground fresh water tank
- 1000 liter overhead ceiling water tank
- 6 sqm backyard store- external storage
- Large Mazeras backyard patio
- shared swimming pool

**Price: Kes. 13 million**

## 3 BEDROOM BUNGALOW IN THORNGROOVE, KITENGELA



A Three Bedroom bungalow available in Kitengela, located along Thorngroove just 6 kilometres from National bank.

**Asking price- 6.5 Million Negotiable**

## 3 BEDROOM APARTMENT OFF DENNIS PRITT RD, KILIMANI



The Property is a 3 Bedroom apartment along kayahwe rd, off Dennis Pritt rd. Everhome Apartments lies approximately 430 meters (linear distance) to the South-western elevation of Kilimani Children Clinic, about 690 meters (linear distance) to the North-western elevation of Yaya Centre and about 3.5 kilometers (linear distance) to the Western elevation of Nairobi City Center. Have a modern plan fitted with inbuilt wardrobes, large sitting room and dining with wooden floors, all units have balconies with clear view of immediate surrounding

**Asking Price – Kshs 17,000,000**



# PROPERTY CENTRE



## DAIMA SPRINGS- IMARA DAIMA



This serene living development is located in Imara Daima just next to Riara Group of Schools and also the Imara Daima Railway Station. This spacious 3 Bedrooms are well equipped with beautiful features and proper maintenance to ensure long-term habitability not forgetting the internal amenities that take care of both individual and family living. 11 Units remaining

✓ **3 Bedrooms @Kes 11.5 Million**

## 3 BUNGALOWS IN JUJA MILIMANI



These units are located within the Juja Milimani area. These units are complete, well built and have the necessary amenities for comfortable living. There is a borehole and surrounded by a perimeter wall.

✓ **Asking Price- Kes 8.5 Million**

✓ **Rental Value- Kes 35,000**

## 2 BEDROOM APARTMENT AT KITENGELA TERRACES



2 Bedroom unit available at Kitengela Terraces Estate. The unit has all the necessary amenities. It has sizeable balconies and accessible through Pinto Road, 3 min drive within off the Nairobi-Namanga highway.

✓ **Asking Price- Kes 5.8 Million**

## SABAKI GREENS ESTATE



Sabaki Greens are located just behind Signature Mall, Sabaki. It boasts of high quality architecture and finishes. Has a rooftop, green garden with relaxing spaces, swimming pool, borehole, backup generator for the common areas and in-house shopping centre.

✓ **3 Br- 7.7M (Cash Price)**



# PROPERTY CENTRE

# HARVEST INDUSTRIAL PARK



The Industrial park, spread over 108 acres is located along Mutongoni Road, near the Devki Steel turnoff. It features warehouses with a side of 7,425 sqft. Has a 66kVa power station, concrete roads, internal sewage systems and 24 hour manned secure fencing.

✓ **Warehouse- Kes 22 Million**

# PURPLE TOWER



Purple tower is a Grade A, Edge-certified office building located 500 metres outbound from the Nyayo roundabout and along Mombasa Road. Consists of two levels of showroom, 1 restaurant level, and 13 office levels available for sale.

# 4 BR MAISONETTE IN DENNIS PRITT RD, KILIMANI



Selling a lovely 4 bedroom semi-serviced maisonette in **Kilimani**, 1/8th acre, aesthetically superior split level design, with two living rooms, dining area and functional deck overlooking a beautiful & mature garden. Large windows, providing good access to lots of natural light. Also has two bathrooms, large kitchen & dhobi area with generous front verandah. Ideal for expatriates, missionary and/or Diaspora returning families looking for a safe, secure & serene location **@Kshs 55m or nearest offer**. \*Viewing can be arranged for serious offers ONLY.

# WALNUT GROVE- KITENGELA



Walnut Grove is an exquisite project located in church road, Milimani Paradise, Kitengela. It consists of 4 Br maisonette in a gated community. Available amenities are 3 bathrooms, solar power, balcony, borehole, children playground, private garden, ample parking and solar water heater.

**Asking price:**

**Kes. 9.95 Million**

**Kes 10.25 Million for Corner Units**



# PROPERTY CENTRE



# COMMERCIAL OFFICE BLOCK, WAREHOUSES IN KISUMU



It's an industrial plot with a double storey office and ware house block, go downs, a service bay, fueling station, ablution block and a weighbridge

It has an office wing and the warehouses wing and Go downs

**PRICE: KES 450 MILLION**

## TG KAWA APARTMENTS- RIRUTA NAIROBI



TG Kawa is a development by True Group Ltd. It comprises of standard studios, medium studios & superior studios. Amenities available include high speed lifts, smart metering, CCTV surveillance, ample parking, shopping annex, rooftop lounge, borehole water etc.

	Price	Expected rental yield
<b>Standard studios</b>	<b>Kes. 2.3M</b>	<b>Kes. 17,000</b>
<b>Medium studios</b>	<b>Kes. 2.82M</b>	<b>Kes. 19,500</b>
<b>Superior studios</b>	<b>Kes. 3.15M</b>	<b>Kes. 21,000</b>

## SANTANA APARTMENTS- KISAUNI



This modern housing project by Megna Homes is located at Kwa Sonko area in Mtopanga touching the old Msa-Malindi Rd. It is centrally located and ideal for professional families, minutes from all social amenities. Facilities available for the project include swimming pool, modern kids' playground, integrated police post, modern sporting arena, secure ample parking, green spaces and commercial spaces. Construction Ongoing

	Price	Expected rent
<b>1 Br</b>	<b>Kes. 2.8 million</b>	<b>Kes. 22,000</b>
<b>2Br</b>	<b>Kes. 4 million</b>	<b>Kes. 28,000</b>
<b>3Br</b>	<b>Kes. 5.2 million</b>	<b>Kes. 35,000</b>



# MALAIKA VILLAGE- KITENGELA



This is a premier estate located only 10 minutes drive from Kitengela Town. This is a fully gated community with controlled development. Malika village neighbours' high end schools, perfect for your child's educational needs. There are all sorts of social amenities including hospitals, shopping malls and hangout zones. It's 30 mins drive from JKIA.

- 3 Br Master Ensuite
- A self contained DSQ.

**Price.**

**Kes. 7.5 million.**

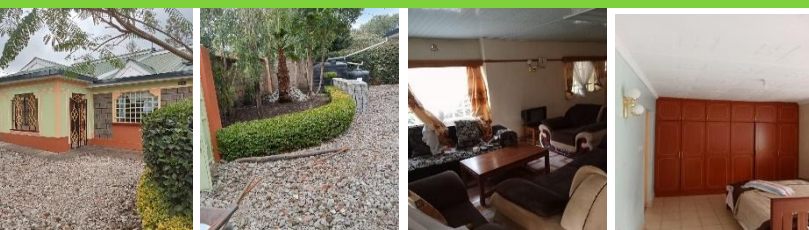
## 3 BEDROOM APARTMENTS- WESTLANDS



3 Bedroom apartment available in Westlands, Waiyaki way just next to Kianda School. It is master ensuite, with a perimeter wall, swimming pool, borehole and back-up generator.

**Price: Kes 14 Million**

## 4- BEDROOM BUNGALOW IN KISERIAN



4-Br house on 1/8 acre in Kiserian, opposite St. Patrick's school, 100 metres from main Rd, 3 mins drive from Kiserian town. There are 5 tanks on site, cabros, chicken house and a perimeter wall, streetlights and located in a gated community.

**Asking price: Kes. 9.8 million.**

## RENTAL UNITS IN KOMAROCK



The Property consists of 3 One-Bedroom units and 2 shops in the ground floor. Location is in Komarock, adjacent to Komarock heights via the entrance through NyamaVilla  
**Asking Price- Kshs 15,000,000**

**Shop Rent- Kshs 8,000**

**One Bedroom Rent- Kshs 10,000**



KCB



PROPERTY CENTRE



## 4- BEDROOM MANSIONETTE IN SYOKIMAU, MACHAKOS COUNTY



4-bedroom mansionette in Syokimau, master and guest ensuite, roofing, driveway cabro, perimeter fence,, burglar proof doors and windows, alarm systems, stylish wall and floor finishes, open kitchen design,

Underground water storage, rain harvest and county water and sewerage connection, backyard garden.

2.5 km from Syokimau through Katani Rd.

**Price:**

**Kes. 14 million** negotiable

## 6 BEDROOM MANSION IN ENTEBBE AVENUE, KITENGELA



The property is 6-bedroom Mansion (Four bedrooms are en-suited and a self-contained D-SQ) located in Entebbe Avenue, Muigai-Kaputiei, Kitengela. Spacious living room, dining and bedroom. Two en-suited bedrooms on the ground floor while four bedrooms are on the first floor with kitchen and a family room. It has a perimeter wall with electrical wire on top. Water is piped in the entire house, parking space for four vehicles with play area for kids. Ample security with police posts nearby. **Selling Price Kes.17M.**

## 3 BEDROOM BUNGALOW ALONG GARRISA RD, THIKA



The property is a 3 Bedroom bungalow sitting in a quarter plot (gated community) a detached S.Q.

This property opens to a spacious sitting room from the main veranda which is enjoined to a semi-open plan kitchen. The property is located along Garissa Road at Maguguni where it neighbors Delmonte, Kenchic, The scenic Fourteen Falls and Kilimambogo. This property is 50m from Thika Garissa High Way.

The selling price is **Kes. 6.5M (Negotiable).**

## ANANDA ESTATE IN GIKAMBURA, KIKUYU



Ananda Estate consist of 4- bedroom units all ensuite. It is next to Kikuyu, Gikambura next to Green Gardens school. Payment plan is pay 30% upfront, remaining amount via installments or mortgage.

Price: **from Kes. 18 million.**



# PROPERTY CENTRE



# TANGELO RESIDENCIES- GETATHURU RD, KABETE



Tangelo Residency consist of a twin block accommodating 36 (2 bedroom) & 6 (3 bedroom) apartments of different typologies. Neighbouring landmarks include: Westgate mall, Village mkt & Peponi sch.

**3 Bedrooms SOLD OUT!**

## Prices:

**2 Br 110sqm- Kes 9.5M**

**2 Br 113 sqm- Kes 10M**

**2 Br 118 sqm- Kes 11M**



## 2 BEDROOM APARTMENT IN MAVOKO



2 Bedroom apartment at Sunset Boulevard, Mavoko municipality. The apartment is in superb condition with a consortium of amenities and is located in the fourth floor.

✓ **Asking Price- Kes 4.5 Million**

## NEELAI GARDENS- KITENGELA



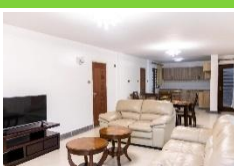
Neelai Gardens in Kitengela; a serene haven in Acacia 2 estate Kitengela. The units consist 3 bedroom units with DSQ. Amenities include access to water, electricity and sewerage.

## Price:

**Kes. 7.5M**



## ONYX PLACE APARTMENTS- MUKIRI RD UTHIRU OFF WAIYAKI WAY



Onyx place apartments comprise of 3 bedrooms with and without DSQs each 1560 sqft with a rooftop terrace. Amenities include 2 parking lots, 2 high speed lifts, kids playing area, visitors parking, solar water heating, CCTV surveillance, borehole, generators, perimeter wall with electric fence, inbuilt wardrobes, spacious rooms, overhead storage tanks, manned gate. The apartments are partly occupied and sectional titles available.

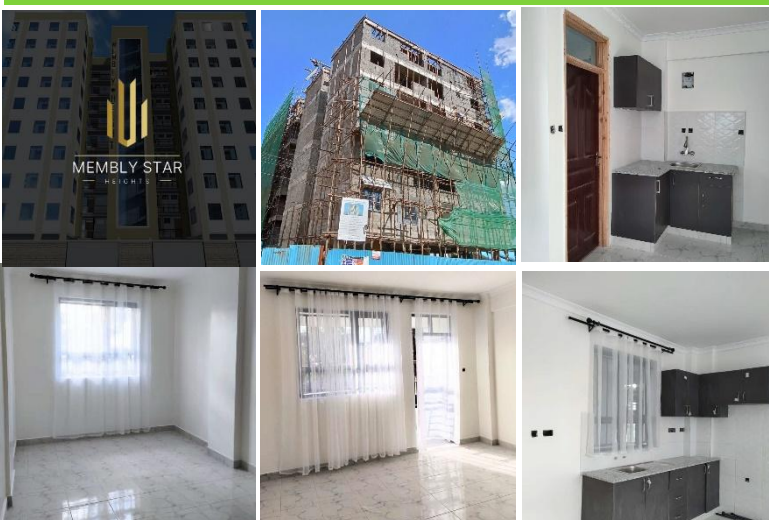
Introductory prices **from Kes. 9.9 million**



# PROPERTY CENTRE



# MEMBLEY STAR HEIGHTS- RUIRU



Membley Star features efficiently and elegantly designed studios and one-bedroom apartments. This project is located in Ruiru, near Tatu City, off Thika Road Superhighway, Opposite Membley Estate. It is 200M from the Dual Carriage- Eastern Bypass. At Membley Star Heights, you are neighboring schools, malls, and police stations.

Features/Amenities include; High-speed lifts, Ample Parking, Borehole water supply & county water supply, Security, CCTV, Internet connectivity, etc

**Studios- 2.3 Million**

**One Bedroom- 4.4 Million**

# ALMOND HEIGHTS PHASE TWO – KITISURU



Almond Heights Phase 2 is a development in Kitisuru, next to the new Kitisuru Estate. It has features like: French double windows, Quality cabinets and fittings, 24 hour security, ground floor parking, Open plan Kitchen, Utility area and Gazebo.

**One Bedroom – 4.5 Million**

**Two Bedroom – 6.8 Million**

# JUJA FAIRLANDS, KIAMBU COUNTY



Juja Fairlands is a new project located at the heart of Juja. It consists of 3 Bedroom duplex apartments and penthouses. The units are move in ready with a living room, dining room, detached DSQ, open kitchen with pantry, granite counter tops and external boundary wall with electrical fence.

**Price:**

✓ **Penthouse- Kes. 10.5M**

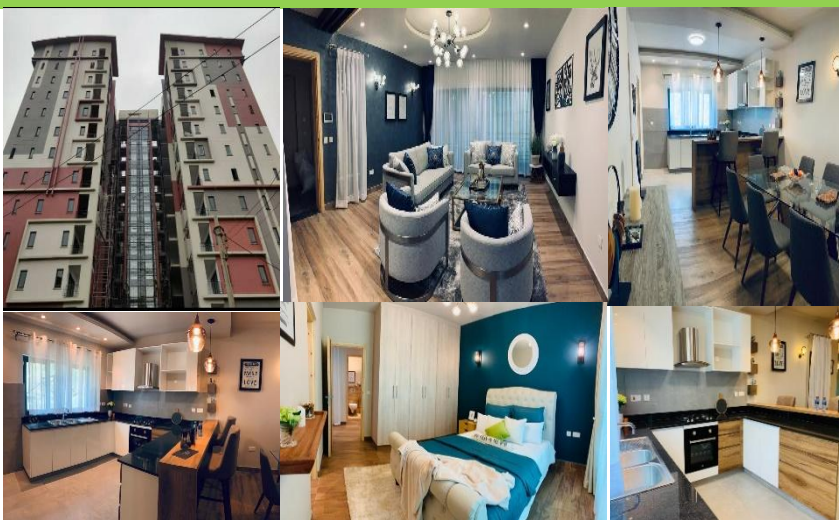
✓ **Lower Duplex- Kes. 8.9M**



# PROPERTY CENTRE



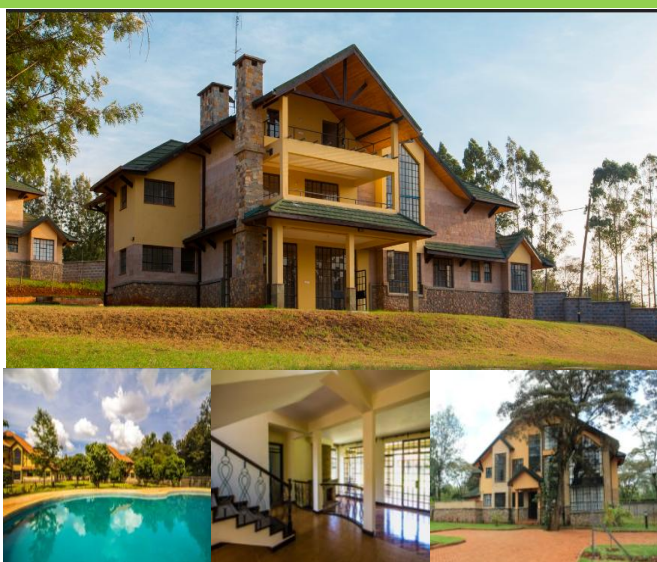
# ELINA RESIDENCES KILELESHWA



Elina Residences is located on Mandra road, upscale Kileleshwa with proximity to CBD, Riverside, Lavington and Westlands. They include 3 Br apartments with DSQ. Amenities include guard house, intercom, CCTV surveillance, 2 level basement parking, four high speed lifts, Gym & steam room, Generators etc.

**Price: 23M**

## MUHUGU PARK – KAREN HIGH END



The country homes are located along Kerarapon road in Karen, it is one of the charming and convenient leafy suburb in Nairobi, lying south west of the city centre. Muhugu Park is a project of 20 up-market Villas. The project on Kerarapon, Karen is approximately some 3km to The Hub, 6km to Karen Crossroads, 7km from Langat a Road and 9km to the Southern Bypass.

The Project comprises of a total of 20 units on half an acre each. The Five bedroom Villa of 450 SQM are all bedrooms en-suite coming with a Corner Bath tub in master bathroom, Extensive fitted wardrobes, Family room, Two DSQs, Four car parks, Laundry, Kitchenette. Other additional features include a Club house, Gymnasium, His & Hers Sauna, His & Hers steam rooms, Swimming Pool, Electric fence, Intercom facility, Solar energy, Inverter based power back-up, ICT provision, Rain water harvesting, Gardens and Borehole.

**Asking Price of Kshs.78M**

## AVIC PARK APARTMENTS IN KILELESHWA



Welcome to Avic Park Apartments, Luxury Apartments located on Laikipia Road, Kileleshwa.

The development comprises of 2 & 3 bedrooms apartments and 4 bedrooms spacious penthouses in a compound of 110 unit sitting on 1.6 acres land. The apartments are ready for occupation.

**FEATURES:** 2 bedrooms(master ensuite) with 176 sqm, 3 bedrooms(master ensuite) with 248 sqm, 4 bedrooms(all ensuite)penthouses with 411 sqm, Modern open plan fitted kitchen, Bright spacious lounge cum dining, Balcony, **OTHERS INCLUDE,** Laundry area, Internet connection, High speed lifts, Management office, Restaurant, Parking, Backup generator, Solar water heaters, Gym, Swimming pool, Perimeter wall with electric fence, 24 hours security, CCTV Cameras.

**2 bedroom Sold Out**

**3 bedroom starting Ksh 36M**



# PROPERTY CENTRE



# SAVANNAH LAND EXCLUSIVE APARTMENTS - KILELESHWA



The Development consists of two blocks - A and B, comprising of 41 highly spacious and luxurious apartments. Block A consists of: Extra features Unit features , Club House & Swimming pool, Gym , Changing rooms (ladies) with water closet, wash hand basin and 2No. shower rooms, sauna , Changing rooms (men) with urinal area, water closet, wash hand basin and 2No. shower rooms, sauna , Swimming pool utility room , Accessible to lift , Solar Water Heating System , High quality sanitary ware, Borehole & underground water storage tank , 24/7 Security System (DSTV, CCTV, Intercom etc) , Parking space for 2 cars to each apartment , Controlled & Gated Community, Children playing area / bicycle riding space wardrobes, Accessible to lift .

Plinth Area of 232.5m2, Lounge with a balcony , Dining area and foyer , Cloak room (Water Closet, Wash Hand Basin and Mirrors), Fitted Kitchen with a cupboard, Polished Granite Kitchen tops, pantry and optional space for a Breakfast Counter top. , Ample Laundry and drying area , Domestic Servant Quarters (DSQ) fitted with wardrobes, bathroom (Water Closet, Shower, Wash Hand Basin and Mirrors), independent Drying area and Gas Cylinder cage

**Selling Price 3 Beroom all ensuite with DSQ Kshs 25 Million**  
**9 UNITS REMAINING**

## ROSEWOOD APARTMENT – KILIMANI



Rosewood Apartments give you the unique advantage of your own serene private retreat in the thriving heart of Kilimani.

Rosewood apartments consists of one tower with 70 apartments, a total of 140 car parking spaces (plus visitors' parking) and 4 High speed lifts ready to whisk you up to your residence. The tower consists of six different sizes of 3 bedroom all ensuite apartments and has magnificent views of its surroundings.

### **Features**

24 Hour Security, Full Backup Generator, Borehole, Cable TV Ready Fully Equipped Gym, Heated Swimming, Pool, High Speed Lifts, Internet Ready, Multiple Balconies, Solar Water Heating, CCTV, Video Intercom

Landscape Garden, Children's Play Area, BBQ Area Designs.

### **Price**

✓ **Two 3 Br units remaining**

✓ **Ksh. 27,000,000-30,000,000 depending on type & size**

## THE OAKLAND RESIDENCES- PEPONI ROAD



Oakland Residences is lucky to be situated at the edge of The Karura Forest Reserve. This remarkable geographical location and natural resource is one of the largest gazetted forests in the world fully within a city limit. It covers an area of 2,500 acres and offers opportunities for visitors to enjoy a leafy green respite from the hustle and bustle of the city to walk, to jog , or simply to sit quietly and experience the serenity of nature in all its diversity.

The definition of elegant living, this magnificent collection of three and four-bedroom apartments sits at the edge of Karura Forest, on Peponi Road, Westlands, one of the most desirable areas of Nairobi. Nairobi's finest restaurants, hotels, premium shopping malls and ultra-hip nightclubs - everything the capital has to offer is easily accessible, offering residents the best of both worlds

**Payment Terms 20% deposits, balance over 6 months**

**3 Br (3065sqft)- 42 Million**

**4 Br (4465sqft)- 72 Million & 76 Million**

**6 Units Remaining**



**BANK**



**For People.  
For Better.**



# MANSION IN MEMBLEY- ALONG THIKA RD



New 4Bedroom plus staff quarter Villa.  
LOCATION: Located along the Membley Road.  
FEATURES  
All en-suit rooms with shower cubicles and inbuilt wardrobes  
Detached servant quarters  
Master with a huge balcony overlooking the garden  
Sitting on a 40\*80 plot.  
PRICE: Ksh. 21.5M

## MARANA SUITES- RUAKA



### Location

Marana suites is located in Ruaka town. The project touches the western bypass and can be accessed via Limuru road, northern bypass and redhill link road.it is 14km from the CBD. It is the closest middle income residential node around the diplomatic zone which hosts amon other entities the UN offices, embassies and international organizations. It's near proximity to Runda, Rosslyn and Nyari , Ruaka has grown to be a promising business and residential destination.

### Amenities

- Rooftop terrace, a safe play area for children and chill spot for family and friends
- High speed elevators
- Power backup
- Fitness center operated as a club to ensure best use and proper mgt
- Ample parking slots plus space for visitors and extra vehicles
- Commercial center
- Social hall where residents and their guests can book to hold functions
- Closeness to malls, supermarkets, banks and entertainment parks.

Price: From 7M

## RIVERBANK APARTMENTS – TWO RIVERS



Riverbank apartments is a project by Centum Investments Company PLC and is the Two River's residential flagship offering. At Riverbank, the beauty of nature combines with all the benefits of modern living. Electricity is reliable, water constant, clean and fresh. There is plenty of parking space and each apartment has a private storage area in the basement. Amenities provided include:

Beautifully landscaped gardens and dams, european branded sanitary, kitchen equipment and tiles, yoga studio, meditation area, indoor and outdoor entertainment area, outdoor barbeque area, Spa with Jacuzzi, steam and sauna , fully equipped gym, basketball court, 7-aside soccer pitch, tennis court, swimming pools, safe and secure children play area

Construction ongoing

Apartment sizes and pricing are:

- 1 Bedroom - 936 Sq.Ft (87sq.m) 17.4M
- 2 Bedroom - 1399 Sq.Ft (130sq.m) 25.6M
- 3 Bedroom - 1991 Sq.Ft (185sq.m) 37M



BANK



For People.  
For Better.

# PAZURI AT VIPINGO - MOMBASA



Pazuri at Vipingo is a master-planned gated community by Superior Homes Kenya. The development comprises 372 units and is located on 105- acre plot, and there are three house types with a choice of two, three and four bedroom units, with all bedrooms ensuite. All the houses have been designed with the climate of the coast in mind. The houses have high ceilings, generous windows and door openings to aid with air circulation and keep temperatures low. The project is located 35KM North of Msa to Malindi highway, soon to be upgraded to dual carriageway

## Amenities

- All bedrooms ensuite
- Open plan kitchens
- Dining & lounge area
- Roof terrace
- Laundry area
- Private parking- 2 vehicles

## Price

<b>2-Br bungalow</b>	<b>– 17.98M</b>
<b>3-Br bungalow</b>	<b>– 24.48M</b>
<b>3-Br mansionette</b>	<b>– 26.48M</b>
<b>4-Br mansionette</b>	<b>– 29.98M</b>
<b>4-Br villa</b>	<b>- 30.98M</b>
<b>4 Bedroom Villa (Super)</b>	<b>- 36.48 M</b>

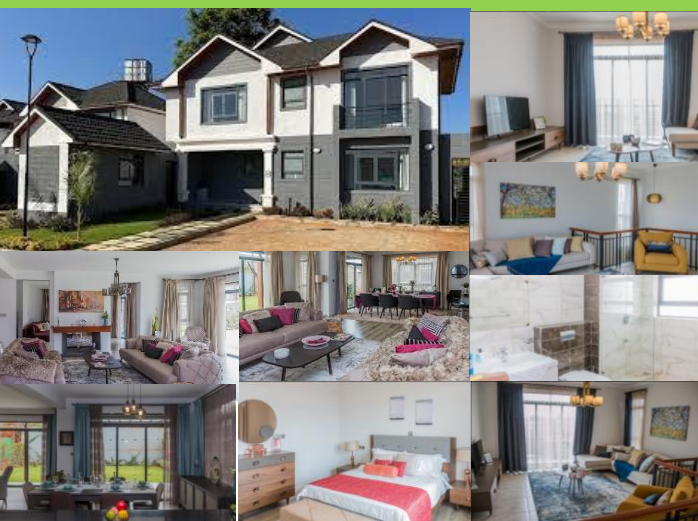
## 5 BEDROOM UNIT IN KAMAKIS



This is a 5 bedroom all ensuite unit at Shalom Garden Estate. It has a plinth area 360 sqm, open kitchen, tiled floor, landscaped garden, Home Office and Library, Servants quarters ensuite and also with serviced access roads.

**Asking Price 23 Million o.n.o**

## FIVE STAR PARADISE – KIAMBU ROAD



Five Star Paradise Runda is tucked away in spectacular scenery on the fringes of Nairobi City next to Paradise Lost, off Kiambu Road.

This is an iconic development designed for absolute luxury and comfort, allowing you and your family to enjoy a truly exclusive countryside living experience with all the amenities, as well as facilities, of a lush and modern gated community.

It consists of 182 exquisite 3-, 4-, & 5- bedroom luxury villas and 66, 4-bedroom townhouses on a 40-acre site with serene rolling hills and panoramic views. Its close proximity to prominent shopping destinations and recreational facilities include Two Rivers Mall, Windsor Golf and Country Club, Muthaiga Golf Club, Ridgeways Mall and the newly opened Wadi Degla Club.

In addition, one will have easy access to the Northern Bypass and Thika Superhighway for prompt access to hospitals, schools, offices and business hubs within a few minutes.

**3 Bedroom- 44 Million**

**4 Bedroom- 54 Million**



# KCB

# BANK



# THE COLOSSEUM RESIDENCES – PARKLANDS



Classic yet contemporary. Stylish. Sophisticated. The Colosseum is all this and more. The perfect amalgamation of form and function.

The rich and elegant architecture is intended to create an aura of space and serenity to be enjoyed by the fortunate few who will inhabit the Colosseum.

The European designer kitchens are fully integrated with appliances and an attached spacious yard. The bathrooms incorporate, walk in showers, 'his and hers' basins in the master bedrooms, and contemporary European sanitary ware and fixtures.

The Colosseum's recreational areas are as expansive as the apartments; a heated infinity swimming pool, multipurpose entertainment hall with barbeque areas, a dedicated children's play area, a rooftop jogging path, fully equipped gym and much more.

## Selling Price:

- ✓ 2 Bdr 20 Million
- ✓ 3BDR 35 Million

# JADE RESIDENCY- KILIMANI NAIROBI



**Jade Residency** apartments are surrounded by the city's most vibrant shopping, business and entertainment spots making them a destination in itself. Offering luxury apartments that are centrally located in Kilimani area, Nairobi. They are in close proximity to: Coptic Hospital Nairobi Baptist Church Daystar University Silver Springs Hotel

- ✓ 2 bedroom master en-suite (112 sqm ) Kes. 14 Million
- ✓ 3 bedroom master en-suite plus DSQ (155 sqm ) Kes. 18 Million

# ALMAS TOWERS – KIRICHTWA ROAD



Almas Towers, Kirichwa Road, Kilimani. Nairobi is set 4.2 km from Kenyatta International Conference Centre and 0.4 km from Adams Arcade Shopping Centre in Kilimani district. There is also a fully-fitted kitchen at the property, equipped with a fridge, an oven and glassware. The apartment consists of 2 bedrooms and 3 bathrooms equipped with a walk-in shower and a separate toilet. Adams bus stop is 5 minutes' walk away from the property.

Major Nairobi sights, such as Adams's Arcade Mosque and Toi Market are located not far away. The city centre is just 5 km away and Wilson airport is 0.5 km from the venue. The restaurant shade hotel is approximately 450 metres away. You can get to Nairobi National Park in a couple of minutes by car.

- ✓ 2 bedroom at Ksh 16m
  - ✓ 3 bedroom at 26M
- 15 units left.



# BANK

## LUXORE – SYOKIMAU MOMBASA ROAD



Luxore is a multi-residential complex comprising Studios, 1, 2 and 3 bedroom Apartments conveniently located off Mombasa road behind gateway mall off Chady road.

1. Studios: Area ranges from 23 sqm. Price from **Kes. 3.4M**
2. One Bedroom- **From Kes. 5.3M** depending on type/size.
3. Two Bedroom – **From kes. 8.2M**
4. Three Bedroom 145sqm- 1 unit resell at **Kes. 10M**

Block one and two are completed and handed over *and now constructing the 3<sup>rd</sup> Block, E and 4<sup>th</sup> Block, K.*

The 3<sup>rd</sup> Block, E is ongoing, set for completion in March 2023.

The payment plan is as follows;

20% - Deposit.

80%- Payable in installments for as long as 31 months from now.

Mortgage financing available.

## KITISURU FALLS RESIDENCE - KITISURU



Kitisuru Falls Residence is a serene gated community offering 1,2 & 3-bedroom apartments. The development overlooks a **beautiful natural water fall** hence the name Kitisuru Falls residence. With breathtaking views of the Getathuru Falls from the comfort of your home, each apartment unifies style with comfort while conveying cozy family living. The design parades admirable taste inspired by the glorious surroundings.

The development is located Kibichiku near New Kitisuru and Kitisuru Spring Estates along Getathuru Road off Ngecha Road. The homes are less than 10 minutes from Sarit Center, Westlands and UN junction – Gigiri in the traffic free road networks of Nairobi.

Currently offplan- completion August 2024, hand over Dec 2024

**Pricing 2 bedroom 8 Million**

**Pricing 3 Bedroom 11 Million**

## TERIAN AFFORDABLE HOUSING – KITENGELA



Terian Estate is an affordable housing project located in outskirts of Kitengela Town, paying frontage to The Nairobi-Namanga Highway.

The project is developed on a 5 acres of land with a typology mix of 2 bedroom apartments for Ksh. 3.6m and 3 bedroom apartments for Ksh. 4.8m.

Terian Estate has been thoughtfully planned out to cater for the community with every basic amenity one needs. The four-storey blocks are evenly spaced for light to penetrate through every unit.

Away from the hustle and bustle of the town, residents get to enjoy a quiet and serene environment with schools, hospitals, malls and recreational centres located within the vicinity.

**Pricing 2 bedroom 3.6 Million**

**Pricing 3 Bedroom 4.8 Million**

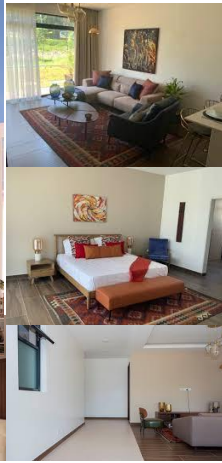


# KCB

# BANK



# CASCADIA– TWO RIVERS



Cascadia Apartments is a 1, 2, 3 bedroom apartments and duplexes residential development within Two Rivers Development, a 102-acre mixed-use urban node that is set to become Kenya's financial hub, business, and residential district of choice located along Limuru road within the Diplomatic Blue Zone area of Gigiri/Runda in Nairobi Kenya.

The Cascadia Apartments feature a main entrance and alternative exits, vehicular building entrance, monolith apartment block, rooftop garden, swimming pool, cascading cliff apartment units, mini-park, kids play area, walkway promenade, 7-a-side football pitch, recreational center e.g. gym, service entrance, and ultra-modern security systems.

**Offplan- expected completion June 2024**

- ✓ 1 Bedroom- 9.2M
- ✓ 2 Bedroom- 14.5M

# MANSION FOR SALE IN NGONG



The property is a 0.16 Hectare land with a mansion of 6 bedrooms in the Ngong area, Kajiado County. It's a full home-unit, with consortium of amenities for comfortable living. Has a:

- ✓ Perimeter Wall
- ✓ Borehole
- ✓ Garden

**Price: 35 Million**

# DAINTY APARTMENT– KIAMBU ROAD



This is a high class residential development located in the middle class Thindigua estate of Kiambu county. It is approximately 10 kms from Nairobi CBD off Kiambu road and only 3 kms to Kiambu town.

The development comprises 48 two bedroom and 24 three bedroom apartments, embracing modern concepts of planning and exterior appearance. Its a comprehensive residential development with spacious and elegant architectural features.

Accommodation includes; Spacious Lounge with a dining area, Spacious bedroom fitted with MDF wardrobes, Kitchens fitted with hood, extractors or fans, Master bedroom ensuite, Close proximity to shopping malls, Balcony, Kitchen yard, Salient Features: High speed lifts, Borehole and Council water, Adequate parking, CCTV, Surveillance camera, Gym, Steam bath & sauna, Electric fence

Back up Generator for common areas

- ✓ 2 bedroom- 14 units remaining for Ksh. 8.2M



**BANK**



# UNITY HOMES – TATU CITY



Situated at the heart of the thriving Tatu City, Unity West is a modern, low-rise, family friendly residential development. Sitting on 7 acres, the development is a fusion of a contemporary lifestyle and community development. Complete with enchanting park views together with expansive outdoor amenities, Unity West creates a truly lucrative investment opportunity for any investor and an ultra modern, all inclusive lifestyle for residents.

Modern imported kitchen with mosaic backsplash and breakfast bar, Polished Italian style granite worktops, European 85kg security door, Wooden teak textured ceramic tiles, Solar water heating with booster, Smoke detectors, High quality wardrobes as standard in all bedrooms, Italian style stainless kitchen and bathroom fittings.

#### Pricing:

- ✓ 1 Br at 5.7M cash buyers, 7.1M under 24 months payment plans.
- ✓ 2 Br at 9.5M cash buyers, 11.9M under 24 months payment plans
- ✓ 3 Br at 19M cash buyers, 23.8 under 24 months payment plans



# KINGS BOMA ESTATE – RUIRU – In progress



King Boma Estate is a housing project in Gitabaya Estate Ruiru Kiambu relaxed neighborhood. Green spaces & Attractive Landscaping throughout the project Secured boundary wall, Borehole, Anti-termite foundation, One parking per apartment (at an additional cost of Kes 200,000), Cabro paved driveways, Community Hall for the Society use, Outdoor Kids Play area The Fun Estate, The Green Estate, Solar street lighting and solar lights in all common areas, Controlled Access and well-planned security check points, WIFI provisions, Provision for TV points, CCTV at entry and exit point, Provision for gas cylinders in kitchen yard

#### Price:

- ✓ 2 Br for 3.7M

Construction ongoing- Expected completion in Dec 2025



# PARADISE PARK ESTATE – ATHI RIVER



PARADISE PARK a professionally planned private residential estate set on the serene, tranquil environment of the Athi River plains-ideal for a peaceful family life style. The Estate sits on 20 acres of land in Athi River and sets exciting new standards in the residential market place. An Exclusive gated development of Spacious 3 bedroom Bungalows with individual Title Deeds in Athi River

The overall site planning also takes into consideration the provision of a proposed Commercial centre and Nursery school. With a secure perimeter wall around the Estate and a manned security entrance PARADISE PARK ATHI RIVER is destined to provide a safe and secure living environment for all its residents.

A carefully planned layout ensures privacy for each home while allowing easy access to shared facilities.

#### **PHASE III OF THE DEVELOPMENT:-**

**46 Bungalows**

**6 Commercial Units**

**Nursery School**

**3Bed room Bungalows – 40Units @ Kshs 10.25M**



# BANK



# AMALIA APARTMENTS – SYOKIMAU



Amalia is a gated community of 2 & 3 Bedroom Apartments that has been carefully planned taking into consideration the needs and desires of modern living. AMALIA is German/Italian latin name. Meaning of Amalia is beautiful girl; hardworking and eager...Guys, Amalia is waiting to be adopted by big Investors like you!!

They say "You must have Fire in the Belly" to achieve super success and make your dreams come true! This is universally accepted fact. You cannot grow if you don't have dreams! You may not achieve your dreams if you can't focus to walk on path of your Dreams, Right!! So wake up now and start running towards your dreams..

## Phase One Completed

- Two Bedroom – 8.8 Million
- Three Bedroom – 10.8 Million

## Phase Two to be Completed in September

- Two Bedroom – 9.8 Million
- Three Bedroom – 11.9 Million

# SUN PARK RESIDENCE -SYOKIMAU



Conveniently located on Chady Road, off Mombasa Road just behind Gateway Mall, Set on a vast 6.2 acres, In close proximity to the new Nairobi Railway Terminus, A short drive from Jomo Kenyatta International Airport, Easy connectivity to the Nairobi Mombasa road expressway, less than 1 KM away.

Spacious 3-bedroom apartments with 3 bathrooms, size 1500sq ft, Spacious 2-bedroom apartments with 2 bathrooms, size 1150sq ft

Each block has an elevator, Lush landscaping and manicured gardens in between blocks, Kids park, with playground, benches, and sandpit

Borehole water in all blocks, Perimeter wall with electric fencing, 24-hour manned entry and exit with controlled parking, CCTV monitoring, Separate visitors parking, One car parking per home, Shops with convenience stores

- ✓ **3 bedroom-11.5Million**
- ✓ **Phase 2 Ongoing to be Completed in December**

# NAIWEST APARTMENTS IN NAIROBI WEST



Located in Nairobi West, Naiwest is a 195-unit one-bedroom and studio project. Due to the close proximity with several major universities, the property is very well suitable for student accommodation as well as young professionals. The property includes two floors of commercial(stores and restaurants) and thirteen residential floors(13 one-bedrooms and 182 studios). There are properties in the area that tailor to the student population most of which are enjoying full occupancy, while some have a long waiting list.

With an average of 10% rental income in terms of investment, this makes Naiwest an ideal investment location for you. The Naiwest is ideally located near Equity Bank in Nairobi West area. Flexible payment options are available on a quarterly or monthly basis through the course of the construction period. Construction time frame of 24 months from October 2021.

**Selling Studios Starting 3.5 Million and 1 Bedroom starting 5 Million**



# BANK

# WESTLOCK CREEK– RUAKA



The Westlock Creek Apartments are located in a cool, quiet, green, leafy and serene area of Nairobi's Suburb. It's an 10 Floor Real-Estate establishment with a total of 28 units; 4 in each floor.

The units are 3 Bedroom Houses with a Detached Servant Quarter( DSQ) for each apartment. It has a 2 level Parking space with 2 parking lots per unit and Visitors Parking. There is also a Rooftop Lounge and a common fully- equipped fitness gym. The residents enjoy panoramic views of beautiful greenery countryside and Nairobi city skyline at a distance. It is strategically located along Limuru road and Western Bypass Road in the New Executive Ruaka-Rosslyn Area . The neighbourhood are the Luxurious Runda, Rosslyn and Nyari Estates, Two Rivers Mall, Village Market. Muthaiga and Windsor Country Club golf courses, international schools, hospitals and other amenities.

**3 Bedroom master ensuit with Dsq- 13M**

# 265 ELMAR ONE– KASARANI



Looking to invest in affordable housing in a high demand location, 265 Elmer One is the right real estate investment for you. 265 Elmer One is located in Kasarani, a highly populated area with high rental demand and in close proximity to all key services ensuring sustained tenancy.. Elmer One comprises of 265 studio, 1 bedroom, 1 bedroom loft and 2 bedroom unit apartments. Expected rental yield for Elmer One is 7.5% per annum with an expected competitive annualized return of more than 21%. Price and size is as follows: Studio measuring 20 SQM selling at 2.1 million. 42 units in total.

1 bedroom measuring 40 SQM selling at 4 million. 40 units in total. 1 bedroom loft measuring 40 SQM selling at 4.2 million. Master bedroom ensuite. 24 units in total. 2 bedroom measuring 60 SQM selling at 5.2 million. 118 units in total. Elmer is 1 km from Thika Super Highway, 20 minutes' to CBD, 10 minutes' to TRM, 20 minutes' to Garden city mall, 10 minutes' to Moi International Sports Center and 40 minutes' to Thika Town. Hospitals within reach include, St. Johns Hospital, St.Francis Hospital and Kenyatta University Hospital. Mountain View School, Braeburn Garden Estate, USIU, Kenyatta University and, JKUAT are some of the schools within close proximity.

- ✓ **Studio 2.5M**
- ✓ **1 bedroom 5.3M**
- ✓ **2Bedroom 6.6M**

# SOUTH PARK – SOUTH C



## **3 Bedroom Apartment Master En suite plus DSQ**

This is a wonderfully designed 3 bedroom all en suite apartment with a DSQ and lovely interiors. The apartment comes with access to a borehole and CCTV. It is located in the prime, serene & secure location of South C, South Park Road. The Spacious Lounge & Dining area opening to a balcony, Spacious kitchen with high & low-level cupboards & pantry, Cloakroom with wash hand basin, Shower room with wash hand basin, Spacious Kitchen area with water heater, Spacious all en suite bedrooms, Laundry area

It also has the following Amenities:

Large Water Tanks, Visitors Parking Space, 24 Hour Security, CCTV Cameras, Borehole

**Selling Price**

**1 bedrooms ; 50 & 55 sqm @ 6.6 M & 6.9 M**

**2 bedrooms : 8.4M -12.1M**

**3 bedrooms : @ 13.5 M to 14.7M**



# BANK



# KADEYA VILLAS- NGONG



Villa for Sale(Kadeya Garden Villas) in Ngong,on Ololua road on Ngong Matasia road,2kms from Ngong town.

There are 3 bedrooms,4 bedrooms and 5 bedrooms, Each Unit sit on a 50\*100 (1/8) plot with each valid title, In a gated community controlled estate, Total land is 5 acres with 45 units, Four parking slots for each unit, Each unit has its own garden, Swimming pool available, with also children playing area, Kitchen fitted with inbuilt cabinets with granite tops, Borehole water available, Laundry area available, A perimeter wall all-around with a common entrance, guarded 24/7.

## PRICES:

- ✓ 3 Bedroom-**13.5 Million**
- ✓ 4 Bedroom- **14.5 Million**
- ✓ 5 Bedroom- **15.5 Million.**

# KARIBU HOMES- ATHI RIVER



**YOUR HOME** is a special place. We also understand that without you, a home is just a house. This thinking is central to our process of designing and creating communities that will allow you, when you move in, to turn the house you have bought into the home of your dreams. At Karibu Homes we are dedicated to providing hard working families with affordable, well constructed homes in thriving communities. We genuinely care about you, our customers, and strive to provide you with a better quality of life.

FLOOR	Standard 2br	Standard 3br	Enhanced 2br	Enhanced 3br	Enhanced 3br+
4th		4,590,000	4,350,000	6,150,000	6,350,000
3rd		4,900,000	4,650,000	6,450,000	6,750,000
2nd	4,050,000	5,000,000	4,750,000	6,650,000	6,950,000
1st	4,050,000	5,000,000	4,750,000	6,650,000	6,950,000
Ground	3,750,000	4,800,000	4,550,000	6,350,000	6,650,000

Prices valid: to Oct 31, 2023

# NORTHCOTE APARTMENTS- KILIMANI



Conveniently located in Kilimani on Argwings Kodhek Road, Northcote Apartments are the perfect choice for people that want the best living accommodation.

## Features Include;

3 Bedroom all Ensuite with DSQ ,Open plan Kitchen with Granite Top, Borehole on Site, Fast Internet, Underground Parking Space, Swimming Pool and Sauna, Modern Gym Facilities, High Speed Lifts, DSTV,Telephone, Intercom Access Points, Standby Back up generators and Jogging track

Unit Plinth Area is 182SQM

## Price:

- ✓ **Kes. 20 Million**
- ✓ **Around 20 units remaining; 40 units with ready tenants!**



# BANK

## MIRA HEIGHTS -NYALI



Mira Heights is a brand new development at the end of Simba lane, off Simba road, in the heart of Nyali. It comprises 3 blocks of apartments known as Eternity, Srenenity and Tranquility towers each with 2 and 3-Br apartments with service rooms and penthouses.

### Amenities

- Roof terrace with spectacular views of vicinity and Indian Ocean
- Gym, spa & club house adjoining swimming pool
- Adequate playground for kids
- Ample parking space and high tech security surveillance
- Back up power – standby generators

**Price: 2-Br: 15M 3-Br: 20M**

## LILY GARDENS – THINDIGUA KIAMBU ROAD



Lily gardens are a development in the thindigua plains perfect for investment. It comprises of 24 units 3bedroom room duplexes with DSQ all ensuites (180m2 . it is located 600m off kiambu road.

Salient features include;

lifts,  
standby generator,  
spacious rooms, .  
onsite borehole for constant water supply,  
electric fence,  
green area,  
roof top terrace,  
GYM and solar water heater.

**12 units remaining**

**Selling price Kshs 13million**

## MINA HEIGHTS – SPORTS ROAD, WESTLANDS



Mina Heights are prime residential apartments located along Sports road in Parklands. The ideal location near parklands Baptist church and school make them perfect for both residential and investment. It comprises of studios, 1,2 and 3 bedroom units.

### Salient Features include;

High-end finishes, Very Spacious rooms, Onsite borehole for constant water supply, Swimming Pool, And Security Features like CCTV installed, Gym Club House, Kids Play Area

### Selling prices:

- ✓ Studio-31.5SQM – kshs.6.0M – 2 units left
- ✓ 1 bedroom not ensuite -57.5SQM- kshs. 9.1M to 10M- prices according to flr level
- ✓ 1 bedroom master ensuite -57sqm- kshs. 13M
- ✓ 2 bedroom master ensuite -87.5SQM- kshs. 13.1 to 14M
- ✓ 3BEDROOM ALL ENSUITE - kshs. 26.5M



# BANK



## FAIRVALLEY HEIGHTS – ATHI RIVER NAIROBI



Fair Valley Heights is the latest **affordable housing development project**. It features efficiently designed 1, 2, and 3 bedroom apartments and spacious 4 bedroom villas. Fair Valley Heights is ideally located in a serene corner of Athi River, yet only a km from the busy Msa-Nbi highway and minutes away from major shopping malls, the airport, and other major industries. With its exclusive amenities, ideal location, and diligent design, Fair Valley Heights are set to become the desired affordable housing scheme in Kenya, ensuring attractive returns for investors and a home to be proud of for first-time home buyers. In line with the government's Big 4 Agenda, The Project's attractive prices and the **3-year interest-free payment plan** will help make the home-ownership journey a reality for many more Kenyans.

### Apartment Price:

- One-bedroom apartment (46sqm)=**Kes 2.15M Sold Out Rent 14,500**
- Two-bedroom apartment (74sqm )=**Kes 3.35M Rent 23,000**
- Three-bedroom apartment (99sqm)=**Kes 4.25M Rent 30,000**
- Four-bedroom Villa (150sqm)=**Kes 8M Sold Out.**

## BELLACASA APARTMENTS- ATHI RIVER



Belacasa Apartments is within Boulevard Gated Community and next to the Safaricom Crystal Rivers Mall. Main features include high quality modern interior design, beautiful Garden views, Large windows for natural light, Tiled flooring and inbuilt wardrobes master ensuite. Common amenities include Boulevard Walkways and Car free Gardens, Ample parking & water supply, 24 hours security, Wifi, DSTV, Major infrastructure including malls like crystal Rivers Mall & China Wu-Yi and dual carriage construction ongoing.

2BR Master Ensuite 760

SQFT 3BR Master

Ensuite 1000 SQFT

✓ **2BR – 4.5M**

✓ **3BR – 6.7M**

## JACARANDA GARDENS- KAMITI RD, KIAMBU



An exquisite complex of 2,3- and 4-bedroom master ensuite apartments with extra wing for guests or staff, Jacaranda Gardens offer spacious areas of living space between 105 & 190 SQM. The apartments are set within the leafy surrounding located in the prime vicinities of the Eastern bypass on the outskirts of the CBD. The third phase of Jacaranda Gardens offers legendary quality and elegance. The apartments have spacious and airy lounges with large bedrooms each having a bay window. Jacaranda Gardens makes for harmonious living.

**3-bedroom unit for 14M available. Ready for occupation**



# KCB

# BANK

# MZIZI AT VIPINGO- NYALI



1255-Palm Ridge is enviably located in the tranquil Vipingo Development in Vipingo, Kilifi. The estate is 3km from Indian ocean with immaculate connectivity via air, road and rail. This prominent location is conveniently:  
1KM from Vipingo Airstrip, 500M off Msa- Malindi Highway, 35KM from Msa CBD, 45KM from Moi Int Airport, 48 KM from Msa SGR Terminus.

#### PRICE:

**Studio - 2.45M**

**1 Br unit- 5.0M**

**2 Br Unit- 7.2M**

**3 Br unit- 8.9M**

## PINE BROOK VILLAS - KITENGELA



CHERD Africa LTD is the owner of the Pinebrook Premier Villas project. The building is situated in a quiet gated community in the wealthy Kitengela town suburbs of Kajiado county, Kenya. The estate is around 1.2 kilometers from Kitengela Town, 400 meters from the Nairobi-Namanga highway, 27 kilometers from Nairobi's CBD, and 15 kilometers from Kenya's and East Africa's main airport, Jomo Kenyatta International Airport (JKIA). The Kitengela town's good road networks include an express road, a bypass, and a tarmac road that link it to Ngong, Kiserian, and Rongai. The estate will have executive villas with four bedrooms, flat roofs, DSQs, family spaces, all-ensuite bathrooms, and balconies off...Pine brook villas will be a classy development that will comprise of 56 executive/elegant Flat-roof modern villas in Kitengela behind GMC food and fun place. The estate is 2 kms from

**4 Bedroom Town House with DSQ - 15Million**

**Four Units remaining**

## GRANDVILLE LUXURY APARTMENTS PHASE 3 – WAIYAKI WAY



With just a few weeks remaining Grandville Luxury Apartments is a Key Signature Developers Property located in Kinoo, 300 Meters off Waiyaki Way, 15 Minutes drive from the heart of Westland's and easy access to CBD with various social and recreational amenities. The Three Bedroom all en-suite plus DSQ Comes with the following features;

- ✓ All Ensuite
- ✓ 146 SQ Meters Each
- ✓ Onsite Borehole Water
- ✓ Solar Water Heating
- ✓ Solar Lit Driveway
- ✓ 24/7 Security

**Price from Kshs. 10,500,000 (Handing over next month)**



# KCB

# BANK



# NIN9 RING ROAD VILLAS - KISUMU



## There's No Place Like Home

FIRST OF IT KIND IN KISUMU!

Modern Gated Residential Development with 10 Premium Villas all with a Lakeview, Location Ring Road, Milimani (Just before Tom Mboya Labour College), 4 Bedrooms Luxury Villas each measuring approx 4000 sq.ft, All Villas have a view of the lake and amazing Kisumu sunsets, Double height family lounge opening up to a patio overlooking the garden, All Bedrooms are ensuite plus 2 extra guest toilets, Includes a Large Study / Home Office, Includes a large open plan kitchen on the ground floor and, outdoor kitchen on the rooftop, All Villas have gardens and natural green spaces provided, All Villas have their own compound, 3 Car Park Spaces provided and 2 extra spaces for visitors cars, Self-contained DSQ and Washing Area, Luxury imported Sanitary ware and Tiles, Large Walk-in Wardrobes, Central Back-up Generator to power all Villas, Perimeter wall fenced with electric fencing and razor wire for increased security, CCTV and 24-hour guards provided, Solar Water Heaters provided, Laminated glass used on all windows for increased security

**Selling at 55 Million**

# GRAND SWISS SUITES - KISUMU



Grand Swiss Suites is luxury accommodation suites located right at the heart of Kisumu City and boasts of being a new lifestyle destination.

This destination has an environment which is well established with futuristic facilities and friendly residential community.

Taking cues from natural elements and combining them with modern design, the luxurious interiors of the suites exude an aura of sophistication. This exclusive suites are fully furnished with all luxury, elegance and comfort. Situated right next to the Grand Royal Swiss Hotel, you will get an opportunity to access and enjoy all services on offer, on demand housekeeping services, laundry services and hotel services all at 25% discounted rate once you purchase the suite. The hotel has exclusive world class amenities that will help you lead a free lifestyle making easy for you to relax and unwind. On offer are 100, one bed roomed en-suite furnished suites which will provide residence to

The Grand Royal Swiss Hotel guests.

**One Off Payment KES 5,000,000, Payment by Installments KES 5,500,000**

**50% Deposit**

**[Balance to be spread to 12 months]**

# LAIKIPIA HEIGHTS- NANYUKI



Laikipia heights in Nanyuki comprise 2 and 3-Br apartments. Construction is

Currently ongoing and payment is off-plan.

**Price:**

- **2 Br (95sqm)-6.65M**
- **2 Br (105sqm)- 7.35M**
- **2 Br + DSQ (181sqm)- 12.67M**
- **3 Br (181sqm)- 12.67M**
- **3 Br + DSQ (202sqm)- 14.2M**



# PROPERTY CENTRE



## BURUBURU PHASE 4 MANSIONETTE



The Buruburu phase 4 mansionette is a stand alone 3-Br Mansionette with one bedroom detached from main house that is located on a 40X80 corner plot. It is about 15 mins drive to Buruburu town centre and already is occupied with a tenant who is renting it.

**Rental Income: 40,000**

**Asking Price: 12.5M negotiable**

## BURUBURU PHASE 3 MANSIONETTE



The Buruburu phase 3 mansionette is located on a corner plot and is a 3-bedroom bungalow with 2 house extensions that are mansionettes with 2-bedrooms each master ensuite, and an extra room that can be used as a shop or office. It is located along Sonko Rd near Metropolitan Hospital opposite Buruburu girls. It is about 10 mins drive to Buruburu town centre.

**Price: 17M negotiable**

## STAR SHINE APARTMENTS – TUDOR, MOMBASA



The developers of Star shine apartments have come up with luxury 4-Br, 3-Br and 2Br apartments in the heart of Tudor commanding a breathtaking view of Tudor Creek. These spacious and luxurious apartments are serviced by 2 lifts and are in a quiet environment with accessibility to public transport, hospitals, schools, restaurants and businesses.

**Price: From 11M**



For further Information, kindly contact:

**KCB Property Centre, Kencom House, Aga  
Khan Walk, P.O. Box 48400-00100**

**For Property Enquiries:**

1. Clifford Ndeto Nzuki- 0703879584  
[CNNzuki@kcbgroup.com](mailto:CNNzuki@kcbgroup.com)
2. Moses Otieno Oduor- 0705545059  
[MOOduor@kcbgroup.com](mailto:MOOduor@kcbgroup.com)

**For Mortgage Enquiries:**

1. Joan Nyamoita Mongare- 0722404054  
[JNMongare@kcbgroup.com](mailto:JNMongare@kcbgroup.com)

These details have been prepared in good faith and as a general guide, not a statement of fact.  
Measurements are approximate and no responsibility is taken for any error, omission or misstatement  
in these particulars which do not constitute an offer or contract.



**KCB**

**PROPERTY CENTRE**



KCB

PROPERTY CENTRE